

VISIT TO WORKSHOP "X"

A group of Engineering enthusiasts who just wanted to turn up and fix or build steam engines started Workshop X.

The location is not advertised, so visits are by invitation only, something to jump at if you get one. The number of Locomotives restored there is amazing and I will send pictures and a list when I get the information. In the meantime, here are some photographs of what was happening on the day of my visit.

Projects on at the moment:- Restoration of a Fowler locomotive & Baldwin, 2 x slate waggons 1 GWR and 1 LNW and the new build of a Hunslet single Fairlie Loco built for the NWNGR this locomotive has a powered bogie under the frames which allows the whole drive to turn for small radius curves, known as is the Gowrie project.

The team are all of a certain age, the lathe operator at my visit being 87. The quality of the work is amazing as is the amount of kit they have. The 40 ton Hydraulic press was built on site also modifications to old equipment to improve their operation or enable them to do other work. The lathe with the chain drive on the saddle is a hydraulic motor to aid setting up & operation. The lathe with the belt drive on the chuck is a stepper motor which turns the chuck at MPR instead of RPM so that a Mig welder at the tailstock can perform beautiful welds on tubes or build up axels etc.

A similar invention is the 4-way chuck mounted on H section steel which when set up vertical can do the same on long steam pipes. I'll leave any more information to the photographs, how many pieces of equipment or loco parts can you identify?

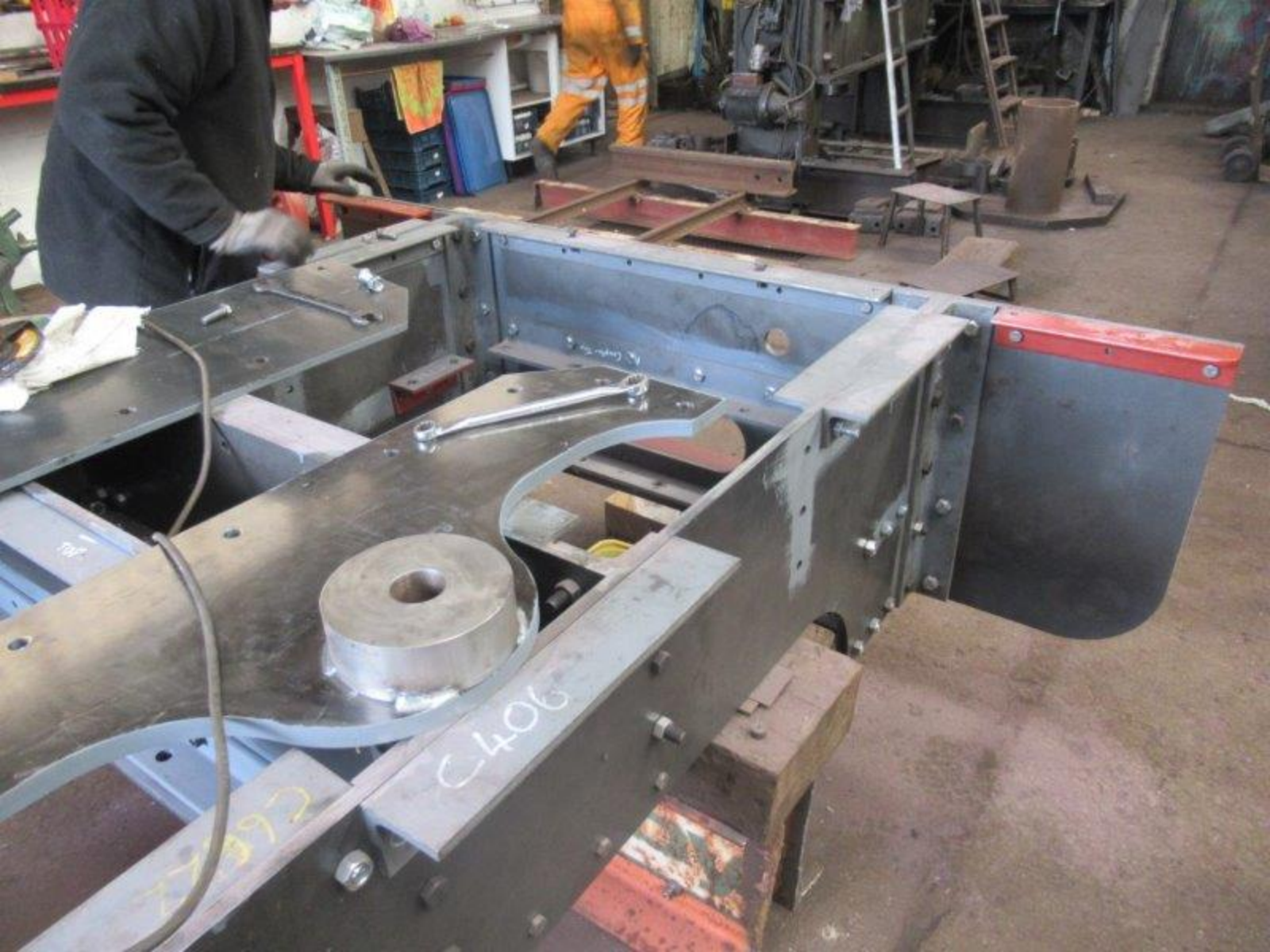
The rails being laid are a practice for another locomotive arriving on Friday, the rumour is a Luttermoller!

To finish the day a very tired Marshall with a wobbly rear axel arrived for an overhaul. The boat fishpond is an old, abandoned project put to further use!





































BAKOWITZ
LOCOMOTIVE
PARTS



STANLEY KNIVES

110 95 85 75 65 55









BROADBENT





























THIS IS
MOTOR
BECK
HEAD

W
NO. 1
FOR DR.
MOTOR
NO. 1

NO. 1
DR.
NO. 1
AND

PULL

400 80 630
110 80 880
170 80 1100
74 80 1500

WALTER

Miller





Attenzione
Dopo l'uso
in loco







CROWN























F TAYLOR & SONS MGR LTD

JUMBO CRANE

SOLE MANUFACTURERS & PATENTERS
TYPE
BOLTON ST. SALFORD





ROBERT L. PRIESTLEY LTD
ENGINEERS
GRAVESEND KENT











MARSHALL SONS & CO

LIMITED

ENGINEERS

GAINSBOROUGH &

LONDON N^o 17328



J. H. MITCHELL, ENGINEER
DUNDEE
GREENGLASS & CO.
LONDON W.C. 2





